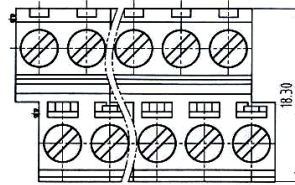
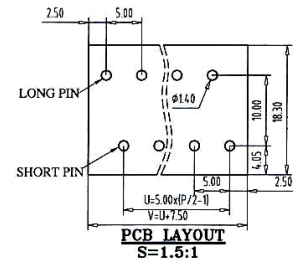


5.00mm Pitch

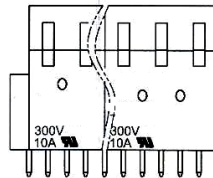
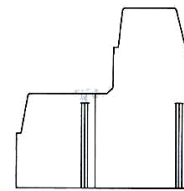
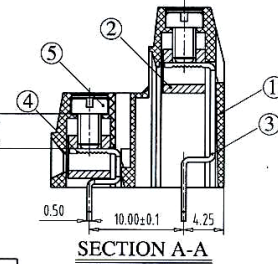
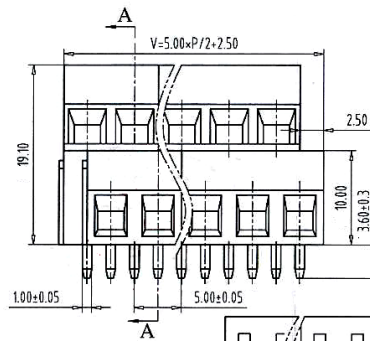
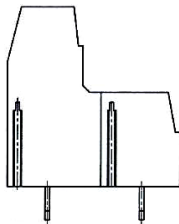


	<b>UL</b> ® <b>US</b>
Rated Voltage	300V
Rated Current	10A
Insulation Withstand Voltage	AC 2000V / Min
Insulation Resistance	500MΩ or More at DC500V
Temperature Range	-40°C to +105°C
Wire Range	14-30 AWG
Screw Torque	0.4Nm / 4.4lbf.in

Units: mm



- ① Housing: PA66(V0)
- ② Block: Brass, Nickel Plated
- ③ Long Pin: Brass, Tin Plated
- ④ Short Pin: Brass, Tin Plated
- ⑤ Screw: Steel, Zinc Plated



**Part Numbering System:**

**401-500 - XXP - XXX**

①      ②      ③

# Pin	04	06	08	10	12	14	16	18	20	22	24
Dim V	12.5	17.5	22.5	27.5	32.5	37.5	42.5	47.5	52.5	57.5	62.5
Dim U	5	10	15	20	25	30	35	40	45	50	55

- ① Series
- ② Number of Poles: 02, 04, 06, ..., 24
- ③ Insulator Color: GRN = Green, BLK = Black, BLU = Blue