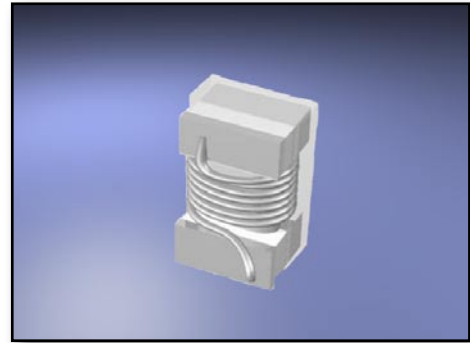


Features :

- Description: SMD ceramic core wire-wound high current chip inductor
- Applications: Audio & video, automotive electronics industry, telecommunication equipment, mobile phones, pagers, computers, printers and relevant equipment. Ideal for high frequency applications.
- Operating Temperature: -40°C to +125°C
- Inductance Tolerance: $\pm 2\%$, $\pm 5\%$, $\pm 10\%$, $\pm 20\%$
- Testing: Inductance and Q are tested on an HP4284A at specified frequency.
- Packaging: Tape & reel, 2000pcs / 7" (178mm) reels.
- Marking: Reels are marked with inductance code and tolerance.
- Additional info available upon request.



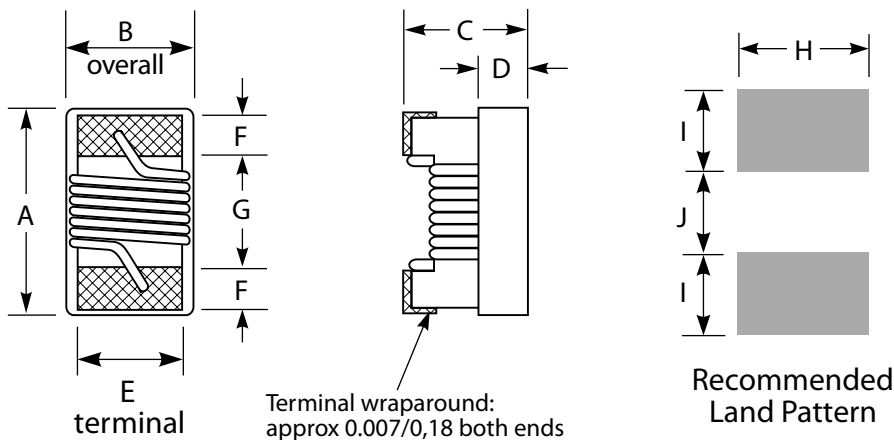
Part Number	Inductance (nH)	L Test Freq. (MHz)	Q Fact. Min.	Q Fact. Typ. (@ 900MHz)	SRF Min. (MHz)	DCR Max. (Ohm)	Rated DC (mA)
AX0603CS-1N6_	1.6	250	24	49	12500	0.030	700
AX0603CS-1N8_	1.8	250	16	35	12500	0.045	700
AX0603CS-2N2_	2.2	250	13	31	12500	0.250	100
AX0603CS-3N3_	3.3	250	35	75	5900	0.045	700
AX0603CS-3N6_	3.6	250	22	53	5900	0.063	700
AX0603CS-3N9_	3.9	250	22	49	6900	0.080	700
AX0603CS-4N3_	4.3	250	22	50	5900	0.063	700
AX0603CS-4N7_	4.7	250	20	47	5800	0.116	700
AX0603CS-5N1_	5.1	250	20	47	5700	0.140	700
AX0603CS-5N6_	5.6	250	26	63	5700	0.075	700
AX0603CS-6N3_	6.3	250	20	60	5700	0.140	700
AX0603CS-6N8_	6.8	250	27	60	5800	0.110	700
AX0603CS-7N5_	7.5	250	28	60	4800	0.106	700
AX0603CS-8N2_	8.2	250	30	82	4700	0.115	700
AX0603CS-8N7_	8.7	250	28	62	4600	0.109	700
AX0603CS-9N5_	9.5	250	28	59	5400	0.135	700
AX0603CS-10N_	10	250	31	66	4800	0.130	700
AX0603CS-11N_	11	250	30	53	4000	0.086	700
AX0603CS-12N_	12	250	35	72	4000	0.130	700
AX0603CS-15N_	15	250	35	64	4000	0.170	700
AX0603CS-16N_	16	250	34	55	3300	0.104	700
AX0603CS-18N_	18	250	35	70	3100	0.170	700
AX0603CS-22N_	22	250	38	73	3000	0.190	700
AX0603CS-23N_	23	250	38	71	2850	0.190	700
AX0603CS-24N_	24	250	36	45	2650	0.135	700
AX0603CS-27N_	27	250	40	74	2800	0.220	600
AX0603CS-30N_	30	250	37	47	2250	0.220	600
AX0603CS-33N_	33	250	40	67	2300	0.220	600
AX0603CS-36N_	36	250	37	47	2080	0.250	600
AX0603CS-39N_	39	250	40	60	2200	0.250	600
AX0603CS-43N_	43	250	38	44	2000	0.280	600
AX0603CS-47N_	47	200	38	62	2000	0.280	600

— Tolerance Code: B = $\pm 0.2nH$, G = $\pm 2\%$, J = $\pm 5\%$, K = $\pm 10\%$, S = $\pm 0.3nH$

Specifications are subject to change without notice.
Customers should verify actual device performance in their specific applications.

Part Number	Inductance (nH)	L Test Freq. (MHz)	Q Fact. Min.	Q Fact. Typ. (@ 900MHz)	SRF Min. (MHz)	DCR Max. (Ohm)	Rated DC (mA)
AX0603CS-51N_	51	200	35	69	1900	0.270	600
AX0603CS-56N_	56	200	38	56	1900	0.310	600
AX0603CS-68N_	68	200	37	54	1700	0.340	600
AX0603CS-72N_	72	150	34	53	1700	0.490	400
AX0603CS-82N_	82	150	34	54	1700	0.540	400
AX0603CS-R10_	100	150	34	49	1400	0.580	400
AX0603CS-R11_	110	150	32	43	1350	0.610	300
AX0603CS-R12_	120	150	32	39	1300	0.650	300
AX0603CS-R15_	150	150	28	25	990	0.920	280
AX0603CS-R18_	180	100	25	22	990	1.25	240
AX0603CS-R20_	200	100	25	-	900	1.98	200
AX0603CS-R21_	210	100	27	-	895	2.06	200
AX0603CS-R22_	220	100	25	-	900	2.10	200
AX0603CS-R25_	250	100	25	-	822	3.55	120
AX0603CS-R27_	270	100	24	-	900	2.30	170
AX0603CS-R33_	330	100	25	-	900	3.89	100
AX0603CS-R39_	390	100	25	-	900	4.35	100

— Tolerance Code: B = $\pm 0.2\text{nH}$, G = $\pm 2\%$, J = $\pm 5\%$, K = $\pm 10\%$, S = $\pm 0.3\text{nH}$

Dimensions :


Size	A Max.	B Max.	C Max.	D Ref.	E	F	G	H	I	J
mm	1.80	1.12	1.02	0.38	0.76	0.33	0.86	1.02	0.64	0.64
inches	0.071	0.044	0.040	0.015	0.030	0.013	0.034	0.040	0.025	0.025