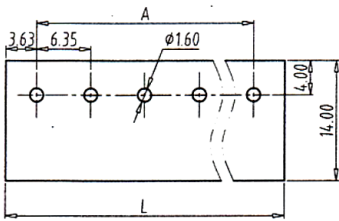


6.35mm Pitch

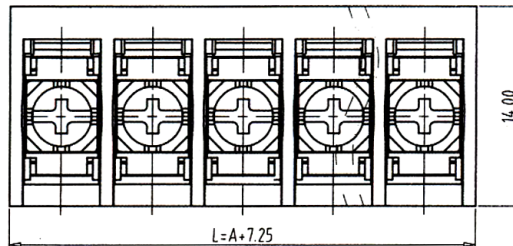


	UL [®] US
Rated Voltage	300V
Rated Current	13.5A
Insulation Withstand Voltage	AC 2000V / Min
Insulation Resistance	500MΩ or More at DC500V
Temperature Range	-40°C to +115°C
Wire Range	16-22 AWG
Screw Torque	0.6Nm

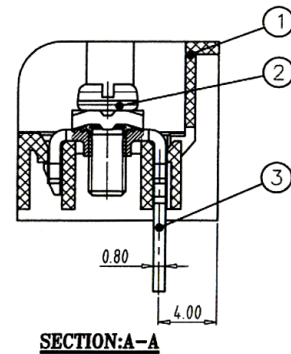
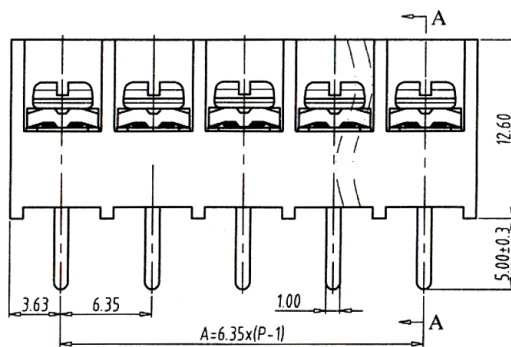
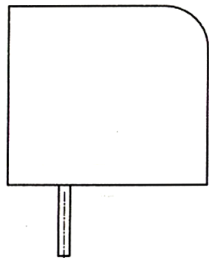
Units: mm



PCB LAYOUT
S=1.5:1



- ① Housing: PA66(V0)
- ② Screw: Steel, Nickel Plated
- ③ Solder Pin: Brass, Tin Plated



Part Numbering System:

BCB351-635 - XXP - XXX

① ② ③

- ① Series
- ② Number of Poles: 02, 03, 04, ..., 30
- ③ Insulator Color: BLK = Black

# Pin	2	3	4	5	6	7	8	9	10	11
Dim L	13.60	19.95	26.30	32.65	39.00	45.35	51.70	58.05	64.40	70.75
Dim A	6.35	12.70	19.05	25.40	31.75	38.10	44.45	50.80	27.15	63.50
# Pin	12	13	14	15	16	17	18	19	20	21
Dim L	77.10	83.45	89.80	96.15	102.5	108.85	115.20	121.55	127.90	134.25
Dim A	69.85	76.2	82.55	88.90	95.25	101.6	107.95	114.30	120.65	127.00
# Pin	22	23	24	25	26	27	28	29	30	
Dim L	140.06	146.95	153.30	159.65	166.00	172.35	178.70	185.05	191.40	
Dim A	133.35	139.70	146.05	152.40	158.75	165.10	171.45	177.80	184.15	