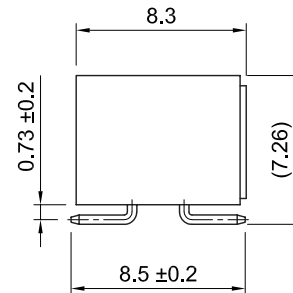
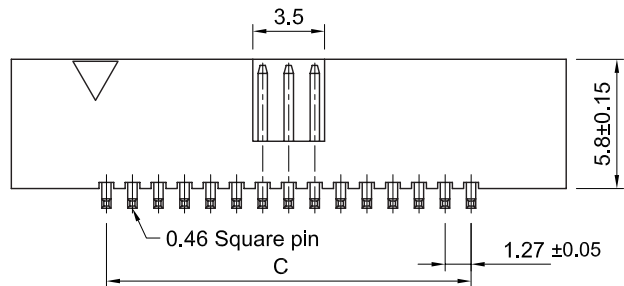
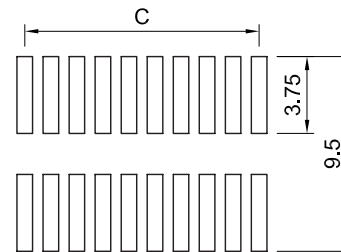
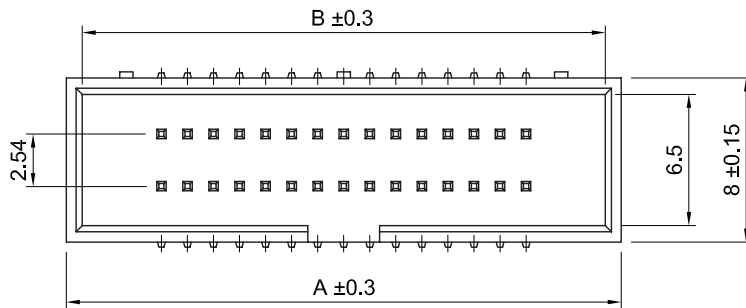


Recommended P.C.Board SMD Layout



Contacts	Dimension mm		
	A	B	C
20	20.70	19.10	11.43
26	24.51	22.91	15.24
30	27.05	25.45	17.78
34	29.59	27.99	20.32
36	30.86	29.26	21.59
40	33.40	31.80	24.13
50	39.75	38.15	30.48
60	46.10	44.50	36.83
68	51.18	49.58	41.91
80	58.80	57.20	49.53
100	71.50	69.90	62.23

Specifications

- Current Rating: 1A
- Insulation Resistance: 1000M ohms / min
- Contact Resistance: 20m ohms max.
- Withstand Voltage: 300V AC
- Temperature Range: -40°C ~ +125°C
- Contact Material: Brass
- Insulator Material: Polyester, UL 94V-0
Standard Nylon 6T
- Contact Plated: See options
Standard: Full Gold Flash

Part Numbering System

BH7AC-SD-588385 - XX - X X X N

- Series**
- No. of Pins**
- Contact Plating**
- Cap Options:**
 - Nil = No Cap
 - F = Film
 - P = Plastic
- Packing Method:**
 - B = Tube
 - T = Tape & Reel
- Insulator Material:**
 - N = High Temperature Nylon-6T

* Contact Plating Option	Full Gold Plating	Gold Plated On Contact Area Tin Plated on Solder Area	Full Tin Plating
	G : Gold Flash G10: Gold 10u" G15: Gold 15u" G30: Gold 30u"	S: Gold Flash S10: Gold 10u" S15: Gold 15u" S30: Gold 30u"	T: Tin 100u"

General Tolerance	
X. ± 0.50	X.° ± 5°
.X ± 0.20	.X° ± 2°
.XX ± 0.10	.XX° ± 1°
Units : mm	