

Pro Components

CBC-51-1 BATTERY CONTACT

SPECIFICATIONS:

Material: Phosphor Bronze #510.

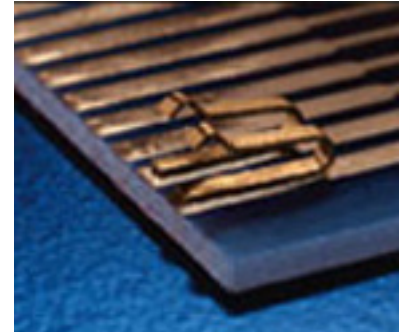
Finish: 10 μ " Gold over Nickel.

Reel Size: 182mm x 12mm(7" x 0.472").

Quantity per Reel: 1000pcs

Taping Spec.: EI-481

Maximum Current: 2 Amps.



DIMENSIONS:(UNITS: INCHES)

