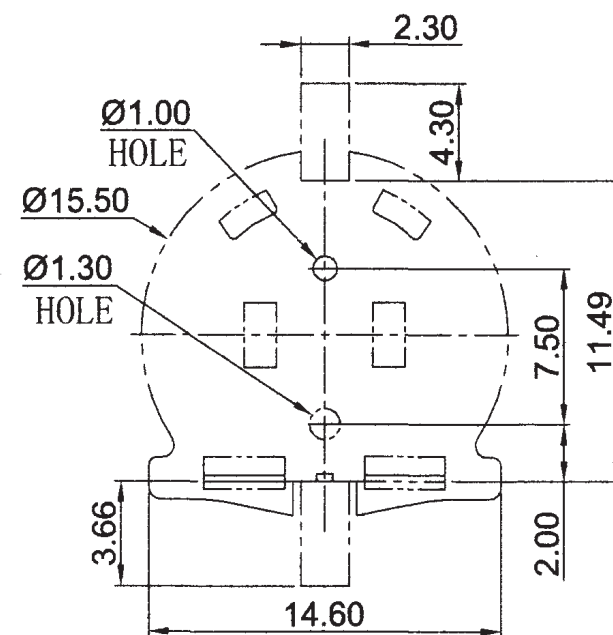
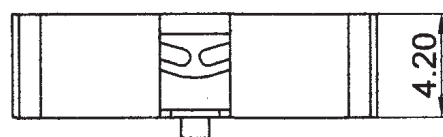


SECTION: A-A



PCB MOUNTING LAYOUT

Specifications

Voltage Rating: 500V, AC/DC
Contact Resistance: 30 milliohms
Insulation Resistance: 1000 megaohms
Operating Temperature: -55°C to +105°C
Housing: PPS UL 94V0
Contact: Phosphor Bronze 0.20 Thickness
Contact Plating: Gold plated over Nickel

General Tolerance	
X. ± 0.30	Angle ± 3°
.XX ± 0.20	
.XXx ± 0.10	
Units : mm	