

Pro Components

CTP-D16 SERIES OVAL PROFILE PRINTED CIRCUIT TEST POINTS

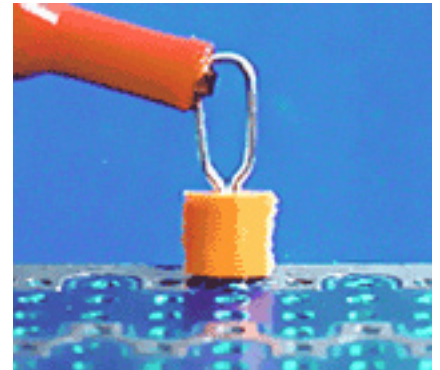
SPECIFICATIONS:

Material: 0.381mm x 0.762mm(0.015" x 0.030") Diameter.
Phosphor Bronze #510 Alloy.

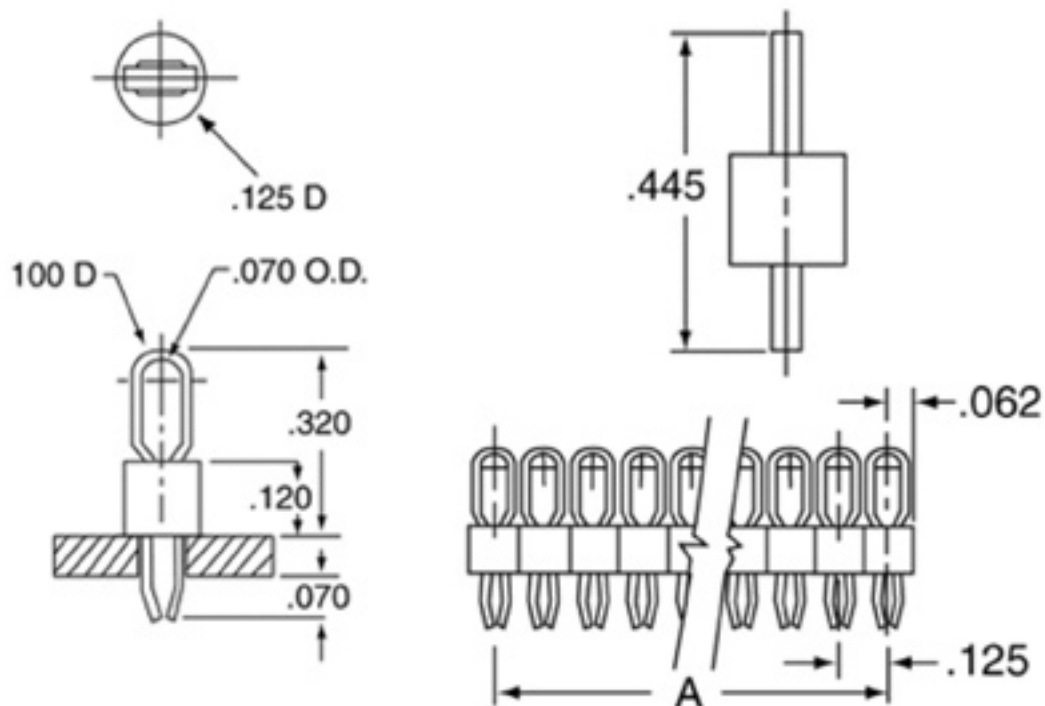
Finish: Bright, Electro-Tin.

Mounting: 1.602mm(0.063") Diameter Hole.

Standoff: 30% Glass Filled Polyester.



DIMENSIONS:(UNITS: INCHES)



Pro Components

CTP-D16 SERIES OVAL PROFILE PRINTED CIRCUIT TEST POINTS

DIMENSIONS:

| Part Number | Dimension "A" | Part Number | Dimension "A" |
|-------------|-------------------|-------------|-------------------|
| CTP-D16-01 | N/A | CTP-D16-16 | 47.625mm (1.875") |
| CTP-D16-02 | 3.175mm (0.125") | CTP-D16-17 | 50.800mm (2.000") |
| CTP-D16-03 | 6.350mm (0.250") | CTP-D16-18 | 53.975mm (2.125") |
| CTP-D16-04 | 9.525mm (0.375") | CTP-D16-19 | 57.150mm (2.250") |
| CTP-D16-05 | 12.700mm (0.500") | CTP-D16-20 | 60.325mm (2.375") |
| CTP-D16-06 | 15.875mm (0.625") | CTP-D16-21 | 63.500mm (2.500") |
| CTP-D16-07 | 19.050mm (0.750") | CTP-D16-22 | 66.675mm (2.625") |
| CTP-D16-08 | 22.225mm (0.875") | CTP-D16-23 | 69.850mm (2.750") |
| CTP-D16-09 | 25.400mm (1.000") | CTP-D16-24 | 73.025mm (2.875") |
| CTP-D16-10 | 28.575mm (1.125") | CTP-D16-25 | 76.200mm (3.000") |
| CTP-D16-11 | 31.750mm (1.250") | CTP-D16-26 | 79.375mm (3.125") |
| CTP-D16-12 | 34.925mm (1.375") | CTP-D16-27 | 82.550mm (3.250") |
| CTP-D16-13 | 38.100mm (1.500") | CTP-D16-28 | 85.725mm (3.375") |
| CTP-D16-14 | 41.275mm (1.625") | CTP-D16-29 | 88.900mm (3.500") |
| CTP-D16-15 | 44.450mm (1.750") | CTP-D16-30 | 92.075mm (3.625") |

PART NUMBER:

