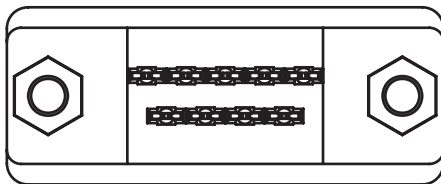
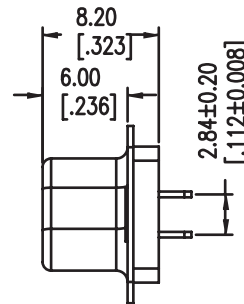
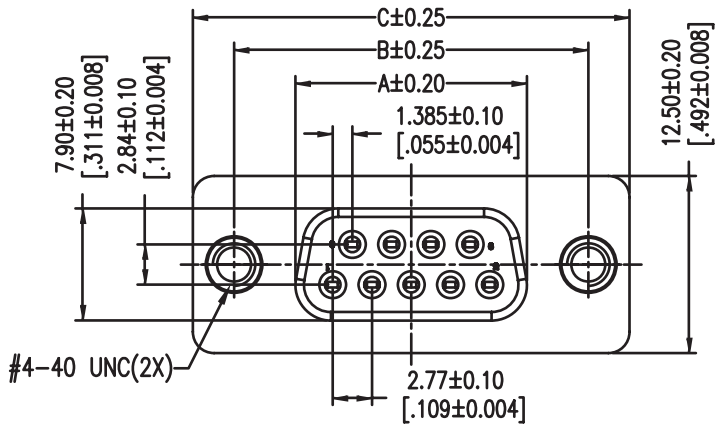
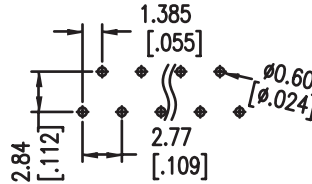
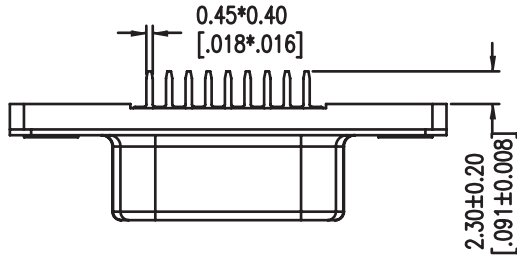


Recommended P.C.B Layout (Top Side)
(PCB BOARD TOLERANCE±0.05)



Specifications

Current Rating: 1 Amp
 Operating Temp.: -55°C ~ +105°C
 Withstand Voltage: 500V AC/min
 Insulation Resistance: 1000MΩ Min.
 Contact Resistance: 30 mΩ Max.
 Housing: PA6T + 30%G.F. UL94V-0, Black
 Shell: Steel, Nickel Plating
 Contact: Phosphor Bronze
 Contact Plating: See options
 Inserts: Brass, Nickel Plating

Part Numbering System

DS19 - XX F G N C A 3

Series: DS19

Contact Number: XX (09, 15)

Contact Type: F = Female

Contact Plating: G = Gold, N = Nickel

Shell Plating: N = Nickel

Insulator Color: 3 = Black

Parts Option: A = No Attachment

Process Option: C = Riveted 4-40 Threaded Hole

* Contact Plating Option	Full Gold Plating	Gold Plated On Contact Area Tin Plated on Solder Area	Full Tin Plating
	G : Gold Flash G10: Gold 10u" G15: Gold 15u" G30: Gold 30u"	S: Gold Flash S10: Gold 10u" S15: Gold 15u" S30: Gold 30u"	T: Tin 100u"

Contacts	Dimension mm		
	A	B	C
09	16.33	24.99	30.81
15	24.69	33.32	39.14

General Tolerance	
X. ± 0.50	X.° ± 5°
.X ± 0.20	.X° ± 2°
.XX ± 0.10	.XX° ± 1°
Units : mm	