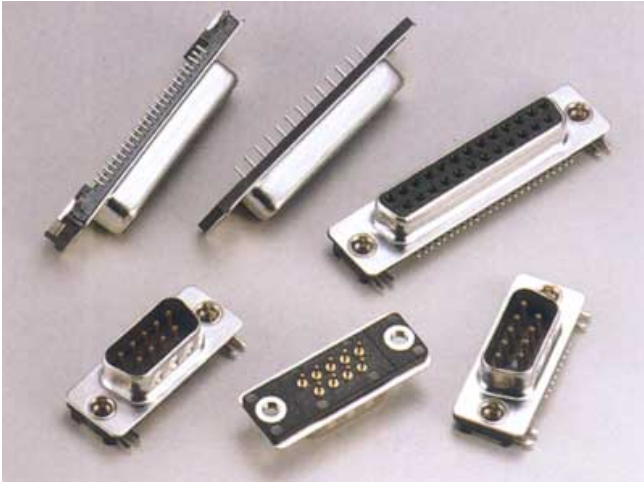


MATERIAL AND FINISHES:

- **INSULATOR:**
PBT Glass Filled
UL 94V-0
- **CONTACT:**
Brass (Male)
Brass or Phosphor Bronze (Female)
- **SHELL:**
Steel
- **PLATING:**
-Contact
1- Gold Flash (Complete)
2- Selective Gold Over Nickel Plated (Contact Area)
Tin/Lead Over Nickel Plated (Tail Area)
-Shell
Tin or Zinc over Copper Plated

ELECTRICAL CHARACTERISTICS:

- **RATING CURRENT:**
3 Amp.
- **CONTACT RESISTANCE:**
< 15 Milliohm
- **INSULATION RESISTANCE:**
> 3000 Megohm at 500V
- **DIELECTRIC VOLTAGE:**
1000V at 1 Minute
- **OPERATING TEMPERATURE:**
-55°C to +105°C

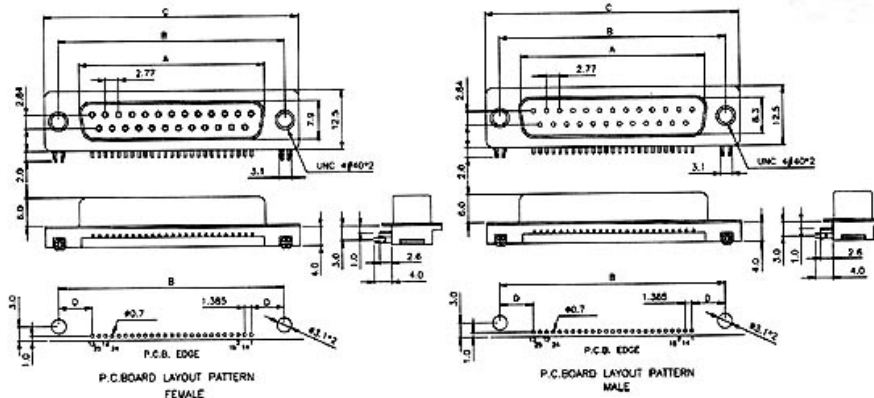


FEMALE Unit: mm

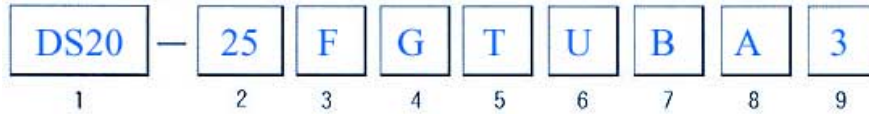
POSITION	A	B	C	D
9F	16.30	25.00	30.8	6.95
15F	24.60	33.30	39.2	6.95
25F	38.30	47.10	53.1	6.93
37F	54.80	63.50	69.4	6.82

MALE Unit: mm

POSITION	A	B	C	D
9M	16.92	25.00	30.8	6.95
15M	25.25	33.30	39.2	6.95
25M	38.96	47.10	53.1	6.93
37M	55.42	63.50	69.4	6.82



HOW TO ORDER:



1. Series

DS20

4. Contact Plating

- S = Selective Gold
- G = Gold Flash
- A = 5 μ" Gold
- B = 10 μ" Gold
- C = 15 μ" Gold
- D = 30 μ" Gold

7. Parts Option

- B = 4#40 Thread Rivet

2. Contact Number

09 25

5. Shell Plating

- T = Tin
- N = Nickel
- Z = Zinc (Chromatic)
- P = Tin + Dimple
- Q = Nickel + Dimple

8. Parts Dimension

- A = Non Accessories
- B = Loose Hex-Screws (4.8*11.8mm)
- C = Fixed Hex-Screws (4.8*11.8mm)
- D = Loose Hex-Screws (5.8*12.0mm)
- E = Fixed Hex-Screws (5.8*12.0mm)

3. Contact Type

- M = Male
- F = Female

6. Process Option

- U = 4-Prong Boardlock

9. Insulator Color

- 3 = Black