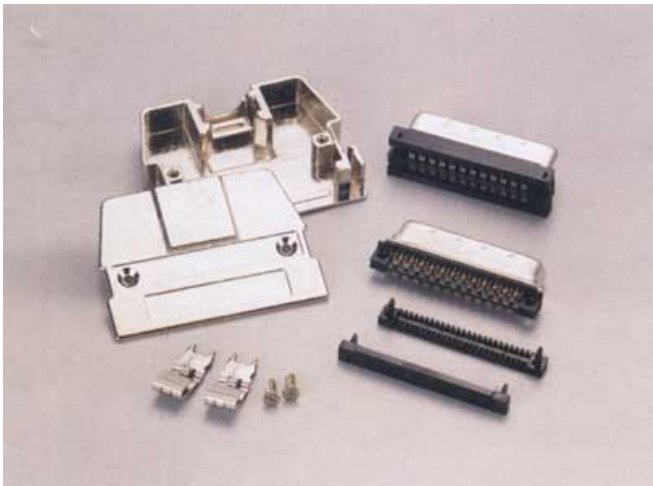


MATERIAL AND FINISHES:

- **INSULATOR:**
PBT Glass Filled
Nylon-6T (Pin Header, Female Header)
UL 94V-0
- **CONTACT:**
Phosphor Bronze
- **SHELL:**
Zinc Alloy
- **HOOD:**
Zinc Alloy or P.V.C.
- **PLATING:**
-Contact
1- Gold Flash
2- Selective Gold Over Nickel Plated (Contact Area)
Tin/Lead Over Nickel Plated (Tail Area)
-Shell and Hood
Nickel Plated

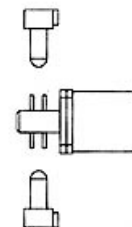
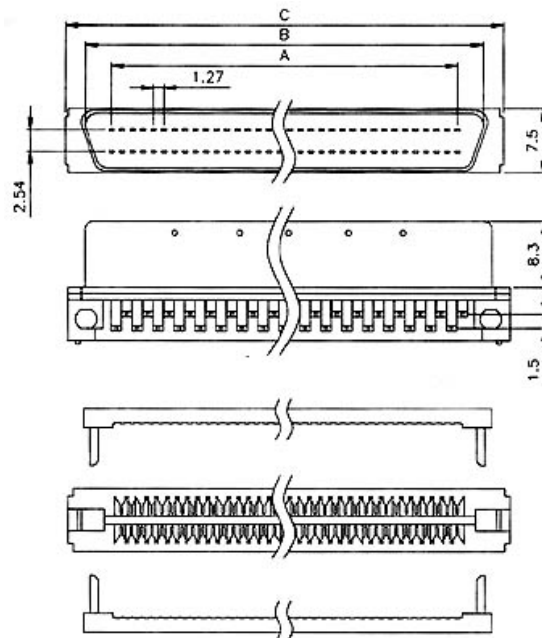
ELECTRICAL CHARACTERISTICS:

- **RATING CURRENT:**
1 Amp.
- **CONTACT RESISTANCE:**
< 15 Milliohm
- **INSULATION RESISTANCE:**
> 500 Megohm at 500V
- **DIELECTRIC VOLTAGE:**
500V at 1 Minute
- **OPERATING TEMPERATURE:**
-55°C to +105°C

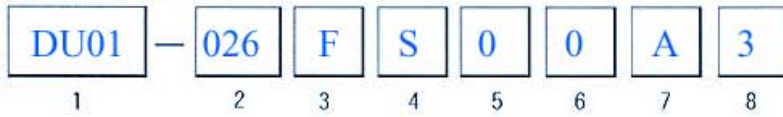


Unit: mm

POSITION	A	B	C
20P	11.43	15.63	20.63
26P	15.24	19.44	24.44
28P	16.51	20.71	25.41
40P	24.31	28.33	33.33
50P	30.48	34.68	39.68
68P	41.91	46.11	51.11
80P	49.53	53.73	58.73
100P	62.23	66.43	71.43
120P	74.93	79.13	84.13



HOW TO ORDER:



1. Series

DU01

4. Contact Plating

S = Selective Gold
C = 15 μ " Gold
D = 30 μ " Gold

7. Parts Option

A = Non Accessories
D = Metal Hood (w/Latch Lock)
E = Metal Hood (w/Retainer Clip)

2. Contact Number

026 028 040 050
068 080 100

5. Fill it with "0"

8. Insulator Color

3 = Black

3. Contact Type

M = Male
F = Female

6. Fill it with "0"