

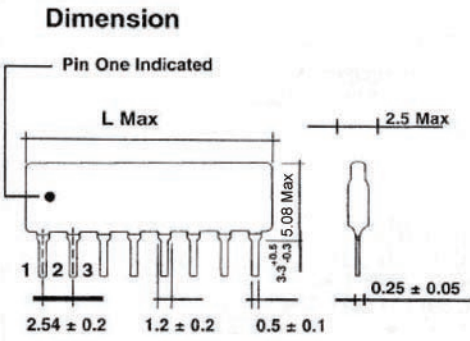
THICK FILM LADDER NETWORKS



L2R8

L2R8

Single Inline Package - R/R2 Ladder

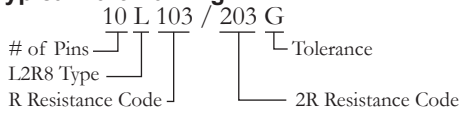


Bits	Number of pins	L max. (mm)
4	6	15.3
5	7	17.8
6	8	20.4
7	9	22.9
8	10	25.4
9	11	28.0
10	12	30.5

Standard R Resistance Value	50Ω - 1MΩ
Output Impedance Characteristic	G=±2%, J=±5%
Rated Power @ 70°C	1/8W
Max Working Voltage	100Volts
Max Overload Voltage	150V
Dielectric Withstanding Voltage	250V
Operating Temperature Range	-55°C ~ +155°C

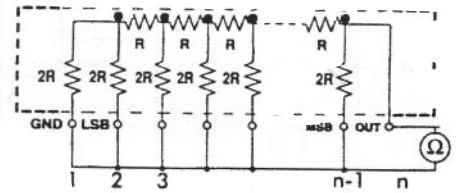
Example: 8Bit, 10Pins with R = 10KΩ 2% = Resistance Code = 103, Tolerance Code = G

Typical Part Marking:

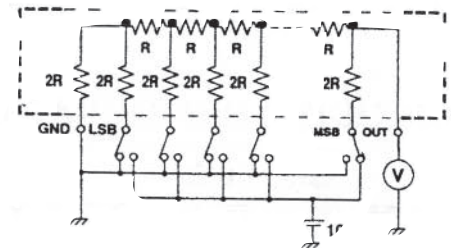


SERIES	PINS	CIRCUITS
L2R8 4BIT	6	
L2R8 5BIT	7	
L2R8 6BIT	8	
L2R8 7BIT	9	
L2R8 8BIT	10	
L2R8 9BIT	11	
L2R8 10BIT	12	

Output Impedance Testing Circuit

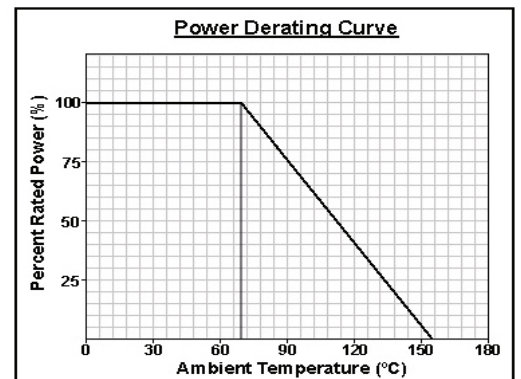
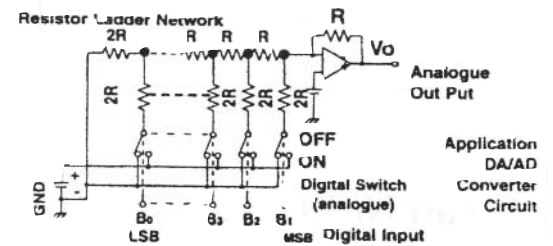


Linearity Testing Circuit



Application

R/R2 Ladder Networks for D/A and A/D converter with bi-polar or CMOS switches.



Part Numbering System

