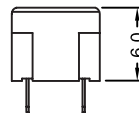
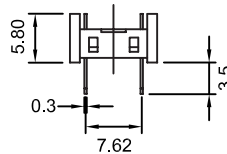
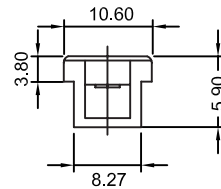
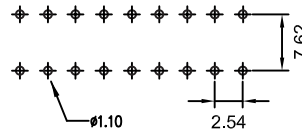


Recommended
P.C. Board Hole Layout



Specifications

Current Rating: 3 Amps
 Insulator Resistance: 1000 Megohms min. @ 500VDC
 Contact Resistance: 15 Millions ohms max.
 Operating Temperature: -40°C ~ +105°C
 Insulator Material: PBT +30% Glass Fiber (UL94V-0)
 Contact Plated: See options

Part Numbering System

MC2 - XX - S - X

Series _____
No. of Contact: _____
Contact Plating: _____
 S = Selective Gold (Standard)
 Gold over nickel underplate on contact area,
 Tin over copper underplate on IDC area
 T = Tin
 G = Full Gold Flash
Insulator Color: _____
 Nil = Black
 GRY = Grey

Contact	A	B
8	7.62	15.42
10	10.16	17.96
14	15.24	23.04
16	17.78	25.58
18	20.32	28.12
20	22.86	30.66
24	27.94	35.74
28	33.02	40.82
40	48.26	56.06

General Tolerance	
X. ± 0.50	X.° ± 5°
.X ± 0.20	.X° ± 2°
.XX ± 0.10	.XX° ± 1°
Units : mm	