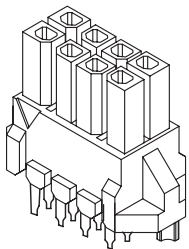
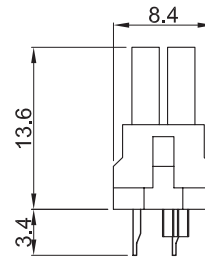
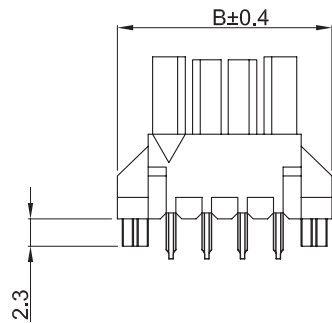
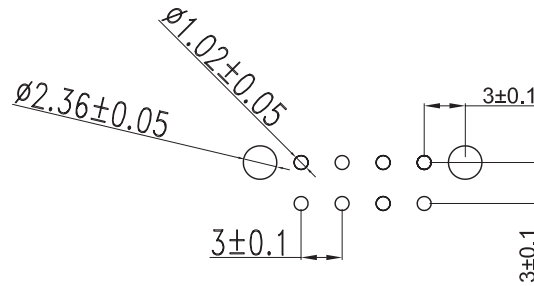
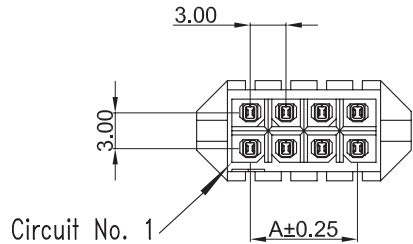


Recommended
P.C. Board Thickness: 1.57mm



Pins	Dimensions	
	A	B
04	3.00	12.0
06	6.00	15.0
08	9.00	18.0
10	12.00	21.0
12	15.00	24.0
14	18.00	27.0
16	21.00	30.0
18	24.00	33.0
20	27.00	36.0
22	30.00	39.0
24	33.00	42.0

Specifications

Current Rating: 5A AC, DC
 Voltage Rating: 250V AC(RMS) or DC
 Insulator Resistance: 100 Megohms min.
 Contact Resistance: 10 mohms max.
 Dielectric Strength: 1500V AC / Minute
 Operating Temperature : -55°C ~ +125°C
 Insulator Material: LCP UL94-V0
 Contact Material: Phosphor Bronze
 Contact Plating:
 Tin (Standard): Tin Plated 0.00010" (0.00254mm)
 over Nickel Plated 0.00002" (0.00508mm)
 Gold (Option): Gold Plated 0.00010" (0.00254mm)
 over Nickel Plated 0.00005" (0.00127mm)
 Packaging: Tray

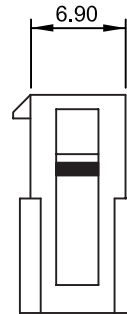
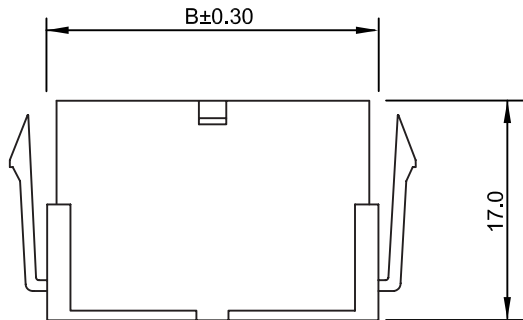
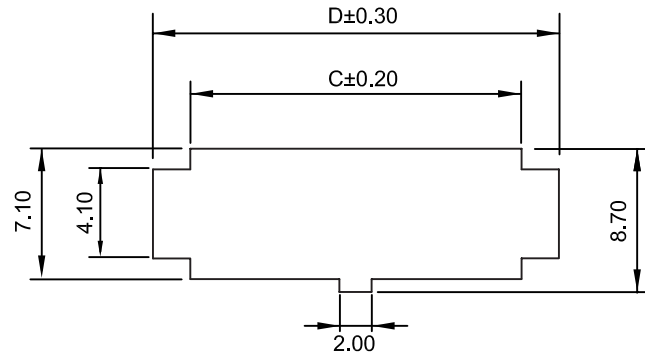
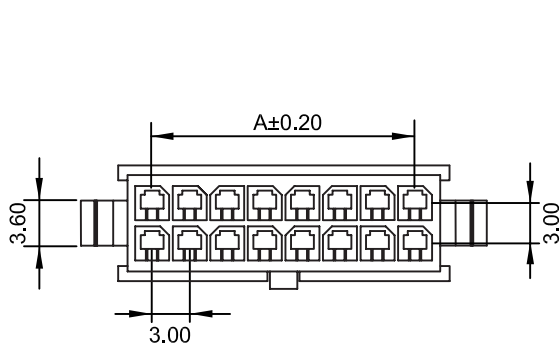
Part Numbering System

MF300-3SD - XX X - X

Series ————
No. Of Pins: ————
 04~24
Post Option: ————
 Nil = with Alignment Pin
 W = without Alignment Pin
Contact Plating: ————
 T = Tin (Standard)
 G = Gold Flash (Option)

General Tolerance	
X. ± 0.50	X.° ± 5°
.X ± 0.20	.X° ± 2°
.XX ± 0.10	.XX° ± 1°
Units : mm	

Panel Hole Dimensions



General Tolerance	
X. ± 0.50	X.° $\pm 5^\circ$
.X ± 0.20	.X° $\pm 2^\circ$
.XX ± 0.10	.XX° $\pm 1^\circ$
Units : mm	

Specifications

Current Rating: 5A
 Insulation Resistance: 1000M Ω Min.
 Operating Temp.: -40°C ~ +105°C
 Withstand Voltage: 1500V AC / minute
 Insulator Material: Polyester, UL94V-0

Part Numbering System

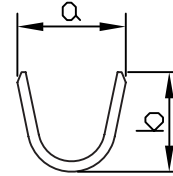
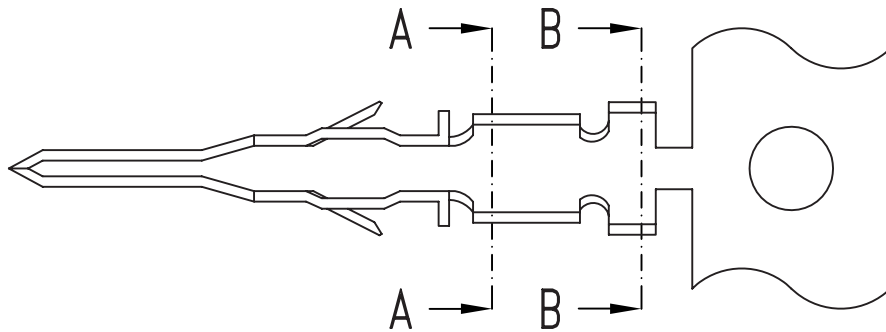
MF300HF-SD - XX

Series

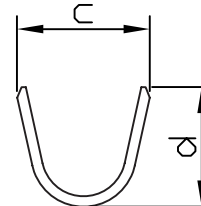
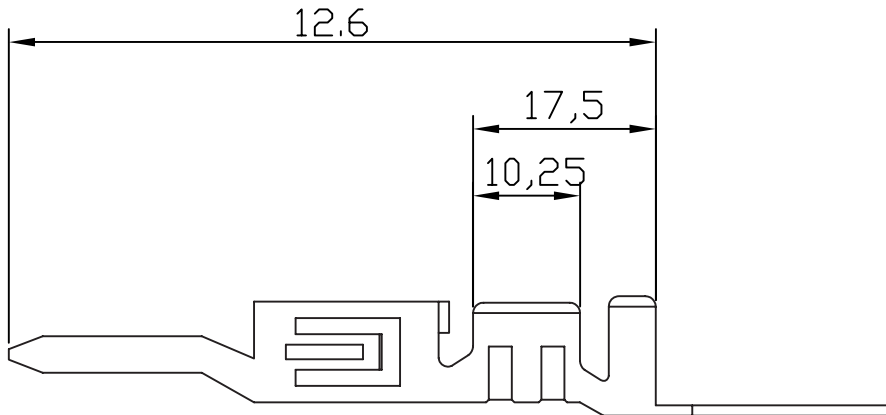
No. Of Pins:

02~24

Pins	Dimensions			
	A	B	C	D
02	-	3.80	4.20	7.90
04	3.00	6.80	7.20	10.90
06	6.00	9.80	10.20	13.90
08	9.00	12.80	13.20	16.90
10	12.00	15.80	16.20	19.90
12	15.00	18.80	19.20	22.90
14	18.00	21.80	22.20	25.90
16	21.00	24.80	25.20	28.90
18	24.00	27.80	28.20	31.90
20	27.00	30.80	31.20	34.90
22	30.00	33.80	34.20	37.90
24	33.00	36.80	37.20	40.90



SEC. A-A



SEC. B-B

Wire Size	Dim. a	Dim. b	Dim. c	Dim. d
#20~#24 AWG	2.1	2.1	2.7	2.5
#26~#30 AWG	1.8	1.6	2.4	1.9

Specifications

Voltage Rating: 250V AC(RMS) or DC
 Contact Resistance: 10m Max.
 Dielectric Strength: 1500V AC / minute
 Material: Brass
 Wire Range: AWG #20~#30
 Thickness: 0.2mm
 Temperature Rise: 30°C Max.
 Qty: 10,000pcs per Reel

Wire Size (AWG)	#20	#22	#24	#26	#28	#30
Current Rating (Amps)	5	5	4	3	2	1

Part Numbering System

MF300TM - X - XXXX

Series

Contact Plating:

T = Tin (Standard)
 S = Selective Gold Flash
 G = Full Gold Flash

Wire Size:

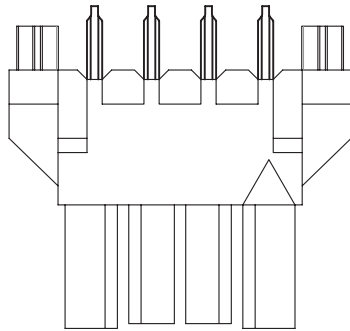
2024 = #20~#24 AWG
 2630 = #26~#30 AWG

General Tolerance	
X. ± 0.50	X.° ± 5°
.X ± 0.20	.X° ± 2°
.XX ± 0.10	.XX° ± 1°
Units : mm	

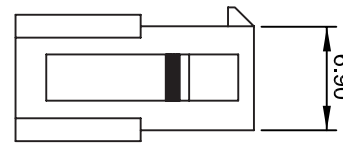
Micro Fit Mating Configuration for MF300-3SD, MF300HF-SD & MF300TM

Pitch: 3.00mm

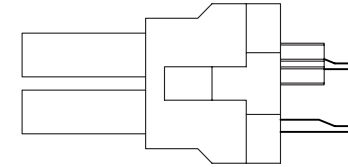
WAFER
MF300-3SD - XX - X



TERNIMAL / Male
MF300TM

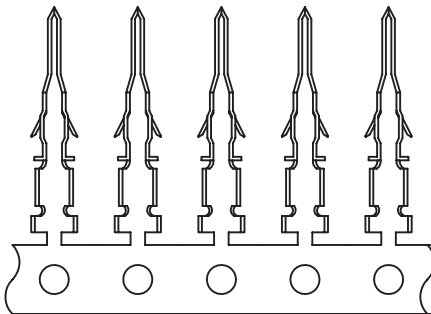
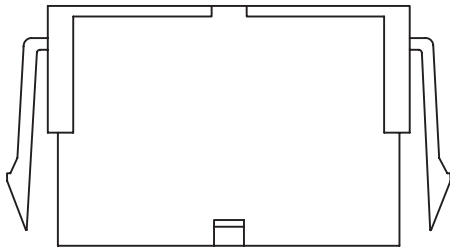


HOUSING/ Female
MF300HF-SD - XX



WAFER
MF300-3SD - XX - X

HOUSING/ Female
MF300HF-SD - XX



TERNIMAL / Male
MF300TM - X - XX