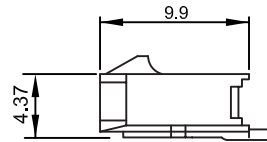
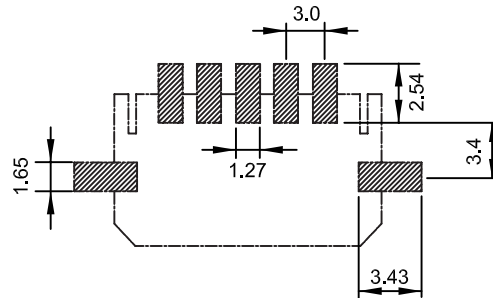
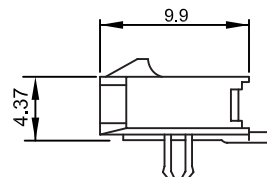
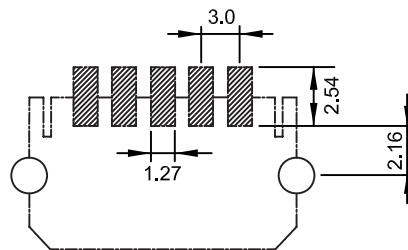


Recommended
P.C. Board SMD Layout



Without Metal Post



With Metal Post

Specifications

Current Rating: 5 Amps
 Insulator Resistance: 1000 Megohms min.
 Contact Resistance: 20 mohms max.
 Dielectric Withstanding: AC 600V
 Operating Temperature: -55°C ~ +125°C
 Contact Material: Brass
 Insulator Material: Polyester, UL 94V-0 LCP
 Contact Plated: Standard: Tin plated.

Part Numbering System

MF300-RS - XX - X - T

Series — MF300-RS
No. Of Pins: — XX
 02~12
Post Option: — X
 Nil = with Metal Clip
 W = without Metal Clip
Contact Plating: — T
 T = Tin Plated

Pins	Dimensions	
	A	B
2	3.00	9.65
3	6.00	12.65
4	9.00	15.65
5	12.00	18.65
6	15.00	21.65
7	18.00	24.65
8	21.00	27.65
9	24.00	30.65
10	27.00	33.65
11	30.00	36.65
12	33.00	39.65

General Tolerance	
X. ± 0.50	X.° ± 5°
.X ± 0.20	.X° ± 2°
.XX ± 0.10	.XX° ± 1°
Units : mm	