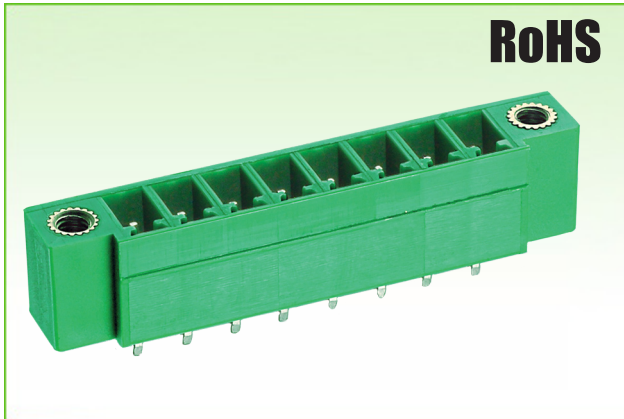
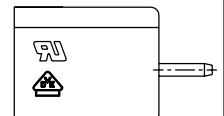
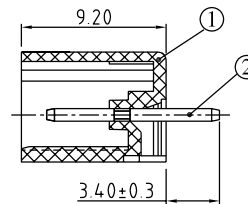
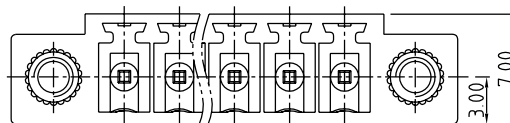
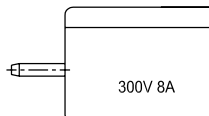
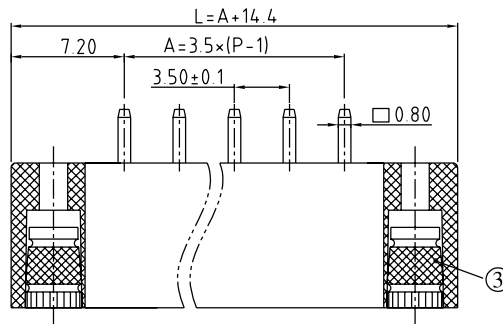
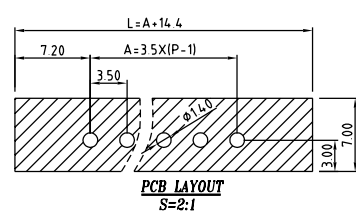


3.50mm Pitch



	<b>UL</b> <sup>®</sup> C US
Rated Voltage	300V
Rated Current	8A
Insulation Withstand Voltage	AC 1500V / Min.
Insulation Resistance	500MΩ or More at DC500V
Temperature Range	-40°C to +105°C

Units: mm



- ① Housing: PA66(V0)
- ② Pin: Brass, Tin Plated
- ③ Nut: Brass

**Part Numbering System:**

**PHW-350V - XXP - XXX**

①                      ②                      ③

- ① Series
- ② Number of Poles: 02, 03, 04, ..., 24
- ③ Insulator Color: GRN = Green

# Pin	2	3	4	5	6	7	8	9	10	11	12	13
Dim L	17.9	21.4	24.9	28.4	31.9	35.4	38.9	42.4	45.9	49.4	52.9	56.4
Dim A	3.5	7.0	10.5	14.0	17.5	21.0	24.5	28.0	31.5	35.0	38.5	42.0
# Pin	14	15	16	17	18	19	20	21	22	23	24	
Dim L	59.9	63.4	66.9	70.4	73.9	77.4	80.9	84.4	87.9	91.4	94.9	
Dim A	45.5	49.0	52.5	56.0	59.5	63.0	66.5	70.0	73.5	77.0	80.5	