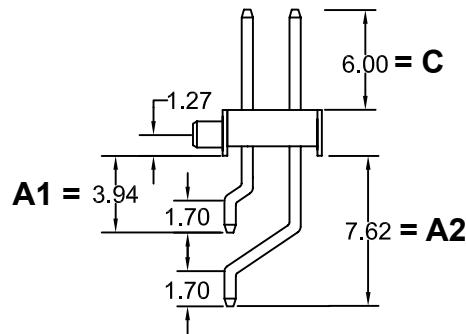
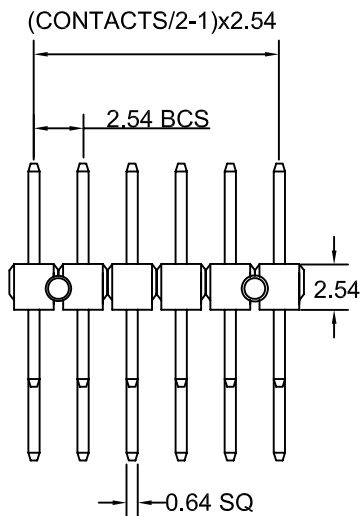
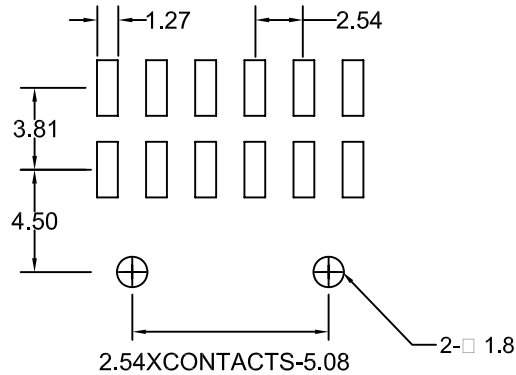
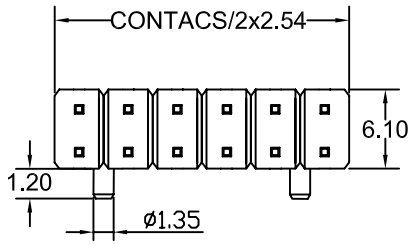


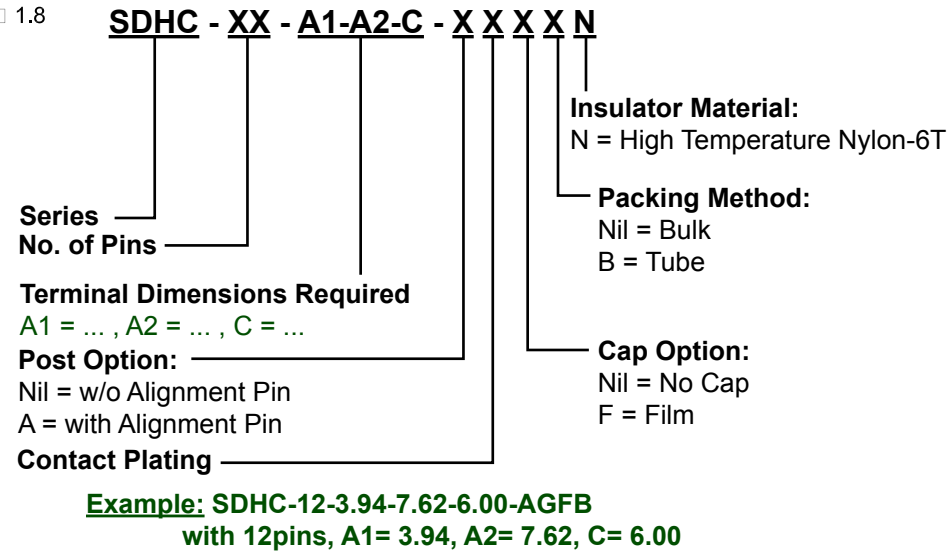
## Recommended P.C. Board Layout



## Specifications

Current Rating: 3 Amps  
 Insulator Resistance: 1000 Megohms min.  
 Contact Resistance: 20 m ohms max.  
 Dielectric Withstanding: AC 600V  
 Operating Temperature:  $-40^{\circ}\text{C} \sim +105^{\circ}\text{C}$   
 Contact Material: Brass  
 Insulator Material: Polyester, UL 94V-0 Nylon-6T  
 Contact Plated: See Option / Standard: Full Gold Flash

## Part Numbering System



* Contact Plating Option	Full Gold Plating	Gold Plated On Contact Area Tin Plated on Solder Area	Full Tin Plating
	G : Gold Flash G10: Gold 10u" G15: Gold 15u" G30: Gold 30u"	S: Gold Flash S10: Gold 10u" S15: Gold 15u" S30: Gold 30u"	T: Tin 100u"

General Tolerance	
X. $\pm 0.50$	X.° $\pm 5^{\circ}$
.X $\pm 0.20$	.X' $\pm 2^{\circ}$
.XX $\pm 0.10$	.XX' $\pm 1^{\circ}$
Units : mm	