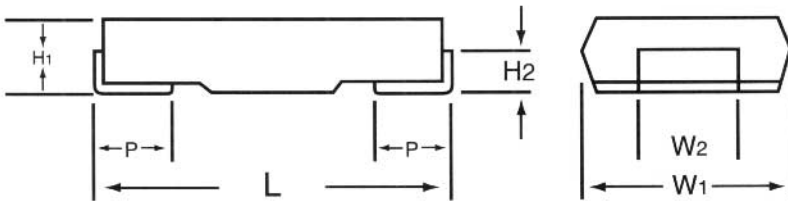


SMR 1S, 2, 3



- Very Low Values
- All Welded Construction
- Low Inductance
- Temperature Coefficient of  $\pm 100\text{ppm}/^\circ\text{C}$
- Excellent current sensing application product

## PERFORMANCE CHARACTERISTICS

ELECTRICAL	SMR 1S	SMR 2	SMR 3
Power Rating (watts) Derated to 0 Load at Maximum Working Voltage	1 @ 70°C 180°C PR	2 @ 70°C 180°C PR	3 @ 70°C 180°C PR
Operating Temperature Range Resistance Range Tolerance	-55°C to 180°C 0.003 - 0.51 $\pm 1\%$ & $\pm 5\%$	-55°C to 180°C 0.005 - 1.0 $\pm 1\%$ & $\pm 5\%$	-55°C to 180°C 0.008 - 1.8 $\pm 1\%$ & $\pm 5\%$
Dielectric Withstand Voltage Insulation Resistance	500 volts RMS 100 meg min.	500 volts RMS 100 meg min.	500 volts RMS 100 meg min.
ENVIRONMENTAL (Operating Temperature Range: -55°C to 180°C)			
Moisture Resistance Load Life @ 70°C - 1000 hrs.	$\pm 2\%$ $\pm 2\%$	$\pm 2\%$ $\pm 2\%$	$\pm 2\%$ $\pm 2\%$

## DIMENSIONS: Inches (mm)

FEATURE	SMR 1S	SMR 2	SMR 3
L - Body Length	.30 $\pm$ .02(7.5 $\pm$ 0.5)	.49 $\pm$ .02(12.5 $\pm$ 0.5)	.57 $\pm$ .02(14.5 $\pm$ 0.5)
W <sub>1</sub> - Body Width	.18 $\pm$ .01(4.5 $\pm$ 0.3)	.24 $\pm$ .01(6.0 $\pm$ 0.3)	.32 $\pm$ .01(8.0 $\pm$ 0.3)
W <sub>2</sub> - Terminal Width	.10 $\pm$ .01(2.5 $\pm$ 0.3)	.16 $\pm$ .01(4.0 $\pm$ 0.3)	.24 $\pm$ .01(6.0 $\pm$ 0.3)
H <sub>1</sub> - Body Height	.08 $\pm$ .01(2.0 $\pm$ 0.3)	.12 $\pm$ .01(3.0 $\pm$ 0.3)	.12 $\pm$ .01(3.0 $\pm$ 0.3)
H <sub>2</sub> - Side Termination	.04 $\pm$ .01(1.1 $\pm$ 0.3)	.06 $\pm$ .01(1.5 $\pm$ 0.3)	.06 $\pm$ .01(1.5 $\pm$ 0.3)
P - Bottom Termination	.05 $\pm$ .01(1.2 $\pm$ 0.3)	.08 $\pm$ .01(2.0 $\pm$ 0.3)	.08 $\pm$ .01(2.0 $\pm$ 0.3)

## DERATING CURVE

## Part Numbering System

SMR 1S - XXXX J T

Product Type
SMD Metal Element Resistor

Rated Power	
Code	Wattage
1S	1 watt
2	2 watts
3	3 watts

Resistance Value	
4-DIGIT CODE	
CODE	VALUES
R003	0.003
R510	0.51
1R80	1.8

TOLERANCE	
CODE	%
F	$\pm 1\%$
J	$\pm 5\%$

Packaging	
CODE	DETAIL
B	Bulk
TE	Tape & Reel (plastic carrier)
Please refer to packing explanation on page 37.	

SMR 1S, 2, 3

PERFORMANCE DATA

Temperature Rise Curves

PACKAGING: Inches (mm)

Style	A	B	W 1	W 2	P	T	d	C	t
SMR 1S	0.20 (5.1)	0.32 (8.2)	0.63 (16.0)	0.30 (7.5)	0.31 (8.0)	0.10 (2.5)	7.0 (178)	0.69 (17.5)	0.06 (1.6)
SMR 2	0.26 (6.6)	0.52 (13.2)	0.94 (24.0)	0.45 (11.5)	0.31 (8.0)	0.14 (3.5)	13.0 (330)	1.00 (25.5)	0.06 (1.6)
SMR 3	0.34 (8.6)	0.60 (15.2)	0.94 (24.0)	0.45 (11.5)	0.47 (12.0)	0.14 (3.5)	13.0 (330)	1.00 (25.5)	0.06 (1.6)