



FEATURES:

- Reflow solderable.
- To provide both momentary operation by lever and center actuation.

MATERIAL:

- Cover: Stainless steel
- Base: UL940V-0 Nylon High-Temp Thermoplastic
Color: Black
- Stem: UL940V-0 Nylon High-Temp Thermoplastic
Color: Black
- Contact: Phosphor bronze with silver cladding at contact surface.
- Terminal: Phosphor bronze with silver cladding at contact surface.
- Spring: Stainless steel

SPECIFICATION

MECHANICAL

- Operation Force: Center push $200 \pm 100\text{gf}$
Lever (CW, CCW) $70 \pm 50\text{gf}$
- Operation Temperature Range: -10°C to $+60^{\circ}\text{C}$
- Storage Temperature Range: -30°C to $+80^{\circ}\text{C}$
- Mechanical Life: 100 000 cycles
- Vibration Test: MIL-STFD-202F METHOD 201A.
Frequency: 10-55-10Hz/1 minute
Directions: X,Y,Z, three mutually perpendicular directions.
Time: 2 hours each direction.
High reliability.
- Shock Test: MIL-STD-202F METHOD 213B
CONDITION A.
Gravity: 50G (peak value), 11 msec
Direction and times: 6 sides and 3 times in each direction.
High reliability.

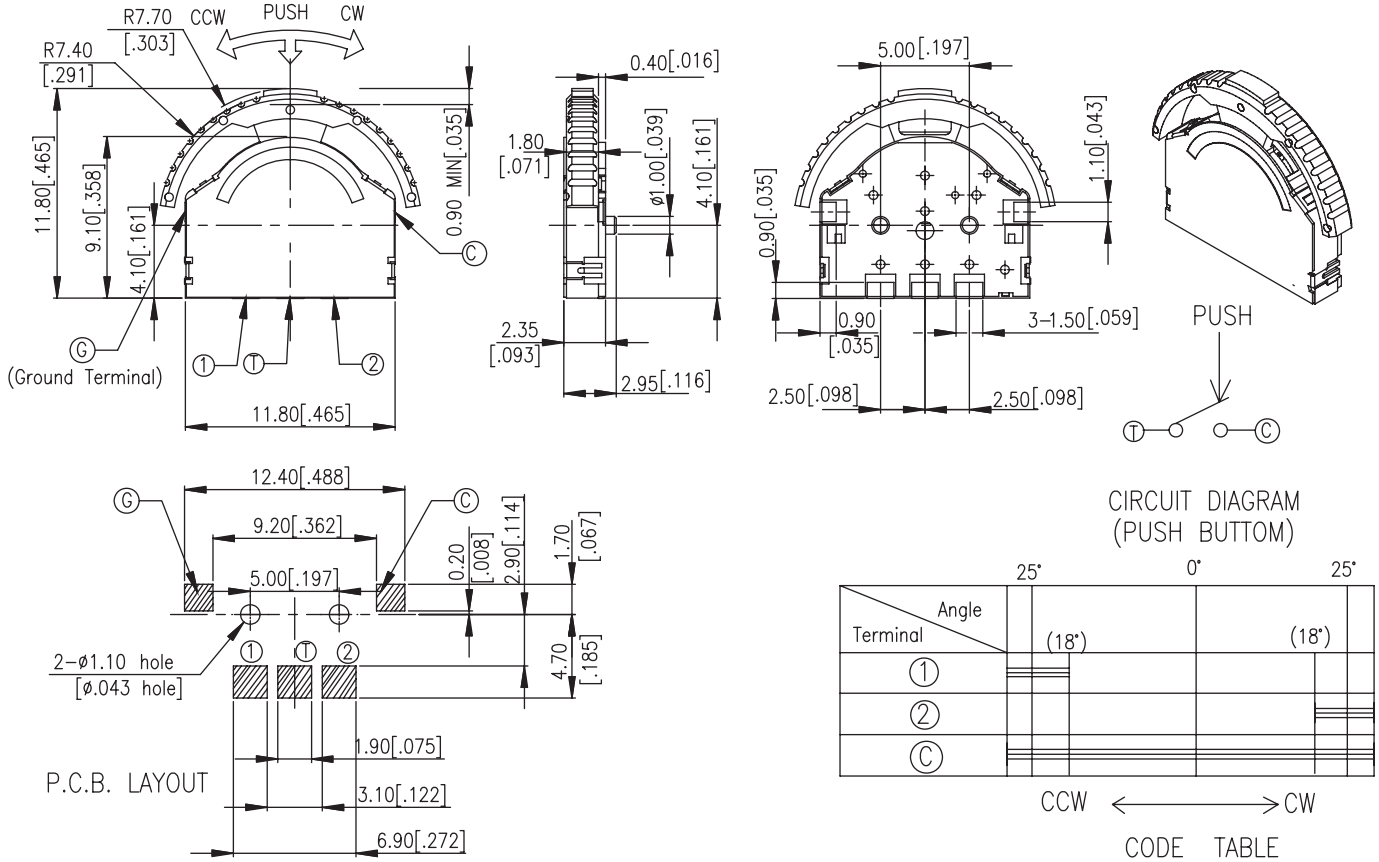
ELECTRICAL

- Electrical Life: 100,000 operations cycles
- Rating: 10mA, 5VDC
- Contact Resistance: $500\text{m}\Omega$ max
- Insulation Resistance: $100\text{M}\Omega$ min at 100VDC
- Dielectric Strength: 100VAC/1 minute.
- Circuit: 1 pole 1 throw

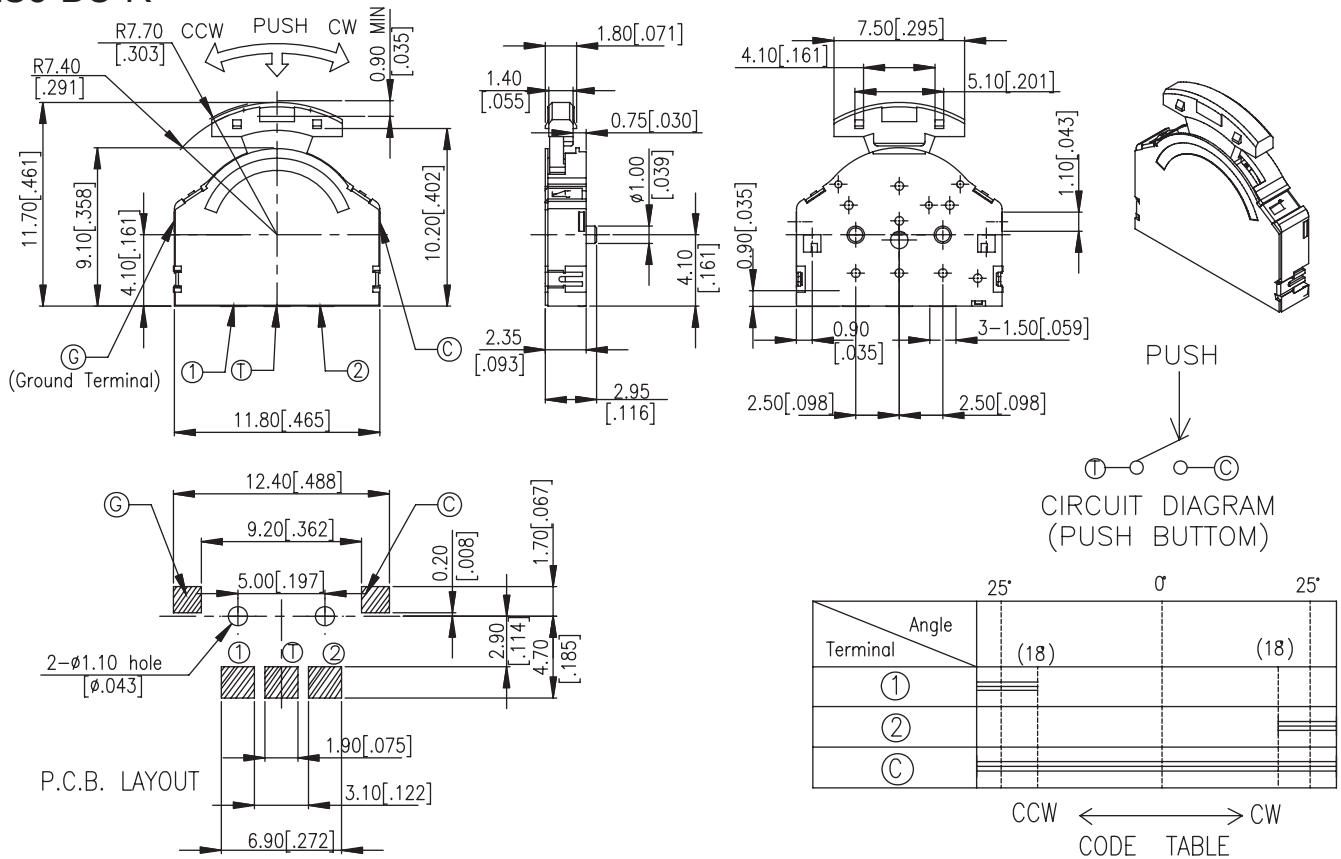
Packaging:

Part Number	Number Per Reel
SPLS3	900

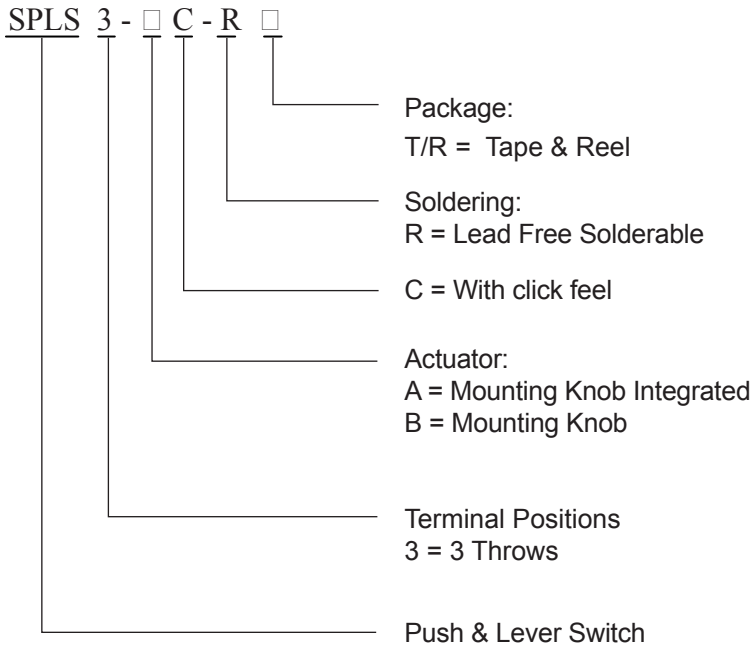
SPLS3-AC-R



SPLS3-BC-R



HOW TO ORDER:



Soldering Process

▲ Hand Soldering: Use a soldering iron of 30 watts controlled at 350°C approximately max 5 seconds while applying.

