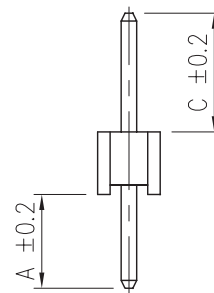
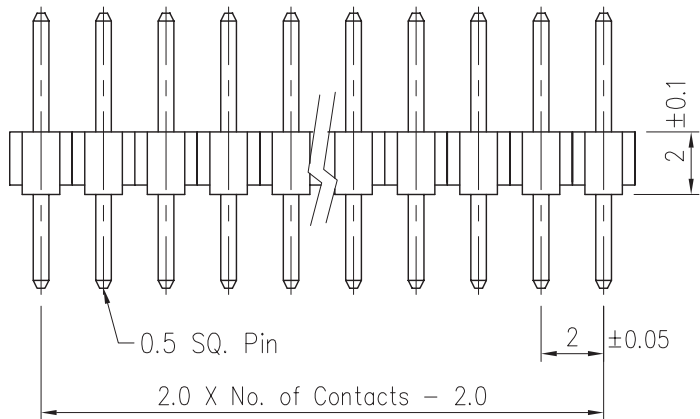
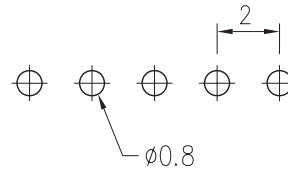


Recommended
P.C. Board Hole Layout



Specifications

Current Rating: 2 Amp
 Insulator Resistance: 1000 Megohms min.
 Contact Resistance: 20 m ohms max.
 Dielectric Withstanding: AC 500V
 Operating Temperature: P.B.T.: -40°C ~ +105°C
 Nylon-6T: -40°C ~ +125°C

Contact Material: Brass
 Insulator Material: Polyester, UL94V-0 P.B.T., or Nylon-6T
 Contact Material: Brass
 Contact Plating: Full Gold, Full Tin, Selective Plated

Part Numbering System

SS200-H2.0 - XX - A-C - X X

Series ———
 No. of Pins ———
 Terminal Dimensions Required
 A = ... , C = ...
 Contact Plating ———
 Insulator Material: ———
 Nil = P.B.T.
 N = High Temperature Nylon-6T

Example: SS200-H2.0-12-2.80-4.00-GN
 with 12pins, A = 2.80, C = 4.00, Nylon-6T

* Contact Plating Option	Full Gold Plating	Gold Plated on Contact Area Tin Plated on Solder Area	Full Tin Plating
	G : Gold Flash G10: Gold 10u" G15: Gold 15u" G30: Gold 30u"	S: Gold Flash S10: Gold 10u" S15: Gold 15u" S30: Gold 30u"	T: Tin 100u"

General Tolerance	
X. ± 0.50	X.° ± 5°
.X ± 0.20	.X° ± 2°
.XX ± 0.10	.XX° ± 1°
Units : mm	