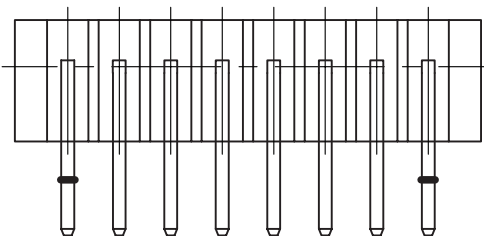
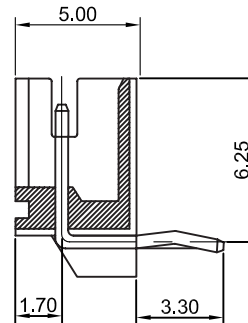
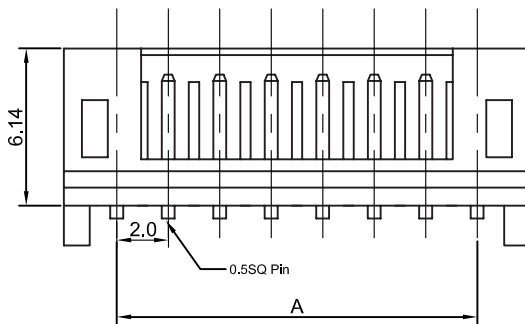
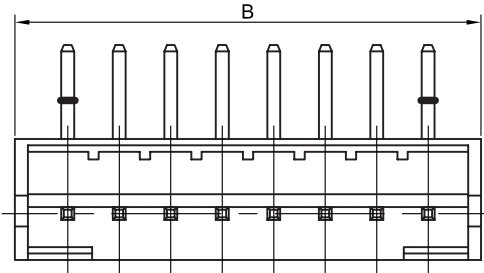
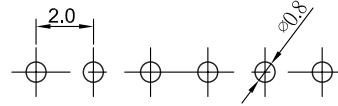


Recommended P.C. Board Hole Layout



Specifications

Current Rating: 2A
 Voltage Rating: 100V AC
 Withstand Voltage: 800V AC / 1 min
 Insulation Resistance: 1000M ohms / min
 Contact Resistance: 20m ohms max.
 Temperature Range: -25°C ~ +85°C
 Insulator: Nylon 66 UL94V-0
 Contact: Brass 0.50mm (0.20)" Square Wire Pins
 Plating: Tin or Gold Plated
 Applicable PC Board Thickness: 0.8 to 1.6mm

Part Numbering System

W200-J1-RS - XX T

Series

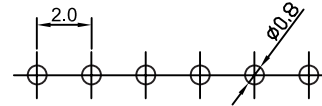
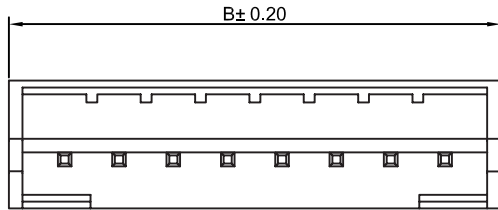
of Contact
02 ~ 15

Contact Plating
T = Tin

Contacts	Dimension mm	
	A	B
2	2.00	6.1
3	4.00	8.1
4	6.00	10.1
5	8.00	12.1
6	10.00	14.1
7	12.00	16.1
8	14.00	18.1
9	16.00	20.1
10	18.00	22.1
11	20.00	24.1
12	22.00	26.1
13	24.00	28.1
14	26.00	30.1
15	28.00	32.1

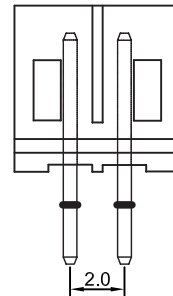
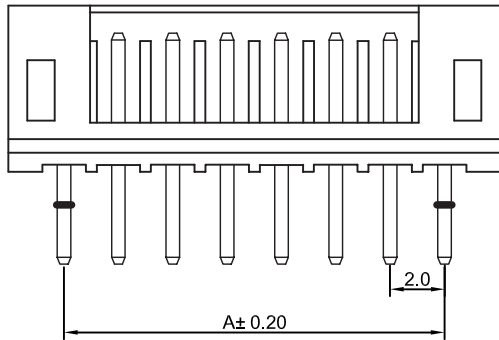
General Tolerance	
X. ± 0.50	X.° ± 5°
.X ± 0.20	.X° ± 2°
.XX ± 0.10	.XX° ± 1°
Units : mm	

Recommended P.C. Board Hole Layout

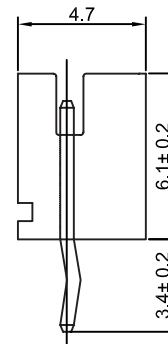


Specifications

Current Rating: 1A
 Withstand Voltage: 800V AC / 1 min
 Insulation Resistance: 1000M ohms / min
 Contact Resistance: 20m ohms max.
 Temperature Range: -25°C ~ +85°C
 Wafer: High Temp. Plastic Nylon 66, UL94V-0
 Pin: High Strength Brass with Tin over Nickel plating
 Applicable PC Board Thickness: 0.8 ~ 1.6mm



2 Pins



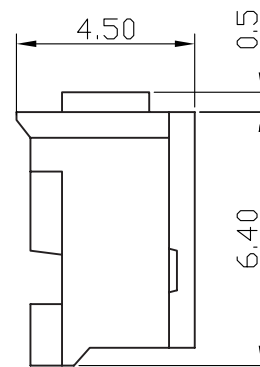
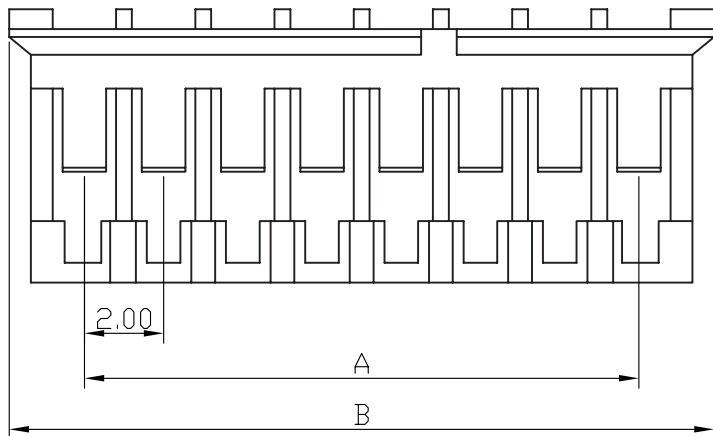
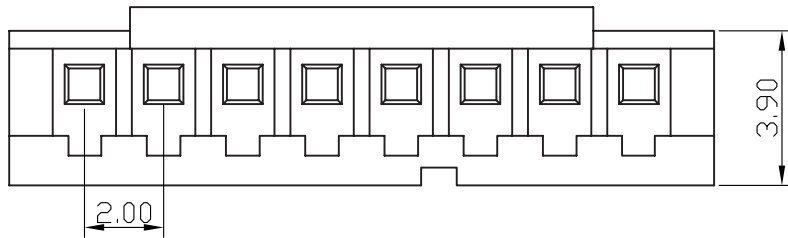
Part Numbering System

W200-J1-SS - XX T K

Series
 # of Contact
 02 ~ 15
 Contact Plating
 T = Tin
 Kink Option
 K = Kinked

Contacts	Dimension mm	
	A	B
2	2.00	6.1
3	4.00	8.1
4	6.00	10.1
5	8.00	12.1
6	10.00	14.1
7	12.00	16.1
8	14.00	18.1
9	16.00	20.1
10	18.00	22.1
11	20.00	24.1
12	22.00	26.1
13	24.00	28.1
14	26.00	30.1
15	28.00	32.1

General Tolerance	
X. ± 0.50	X.° ± 5°
.X ± 0.20	.X° ± 2°
.XX ± 0.10	.XX° ± 1°
Units : mm	



General Tolerance	
X. ± 0.50	X.° ± 5°
.X ± 0.20	.X° ± 2°
.XX ± 0.10	.XX° ± 1°
Units : mm	

Specifications

Current Rating: 2a ac, dc
 Voltage Rating: 100V AC / max
 Operating Temperature: -25°C ~ +85°C
 Contact Resistance: 20 m ohms max.
 Insulation Resistance: 1000M ohms min.
 Withstanding Voltage: 800V AC / minute
 Insulator Material: Nylon 66, UL94V-0
 *Housing mates with: Wafer: W200-J1,
 Terminal: W200T-J

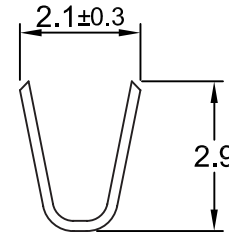
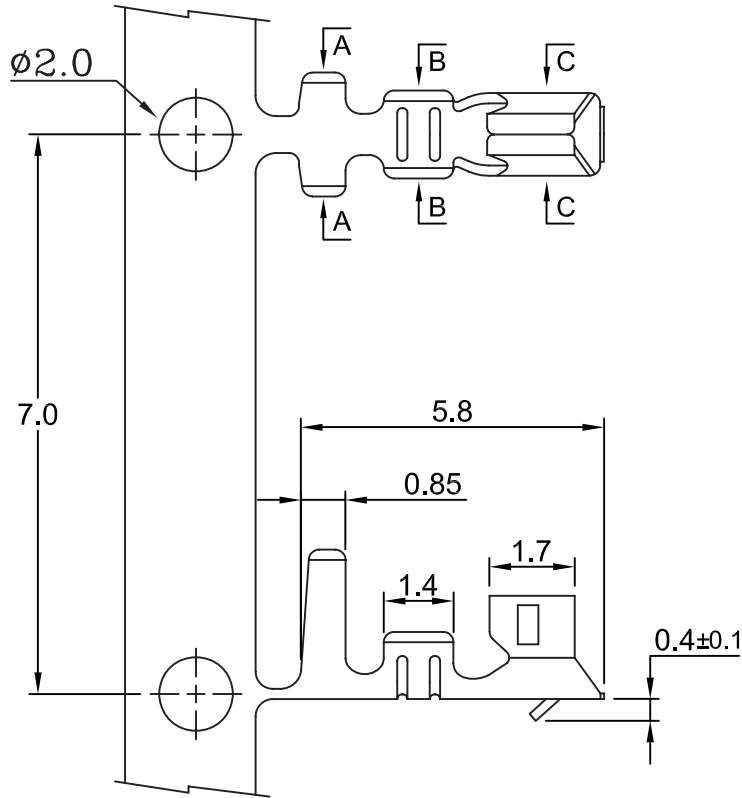
Part Numbering System

W200H-J - XX

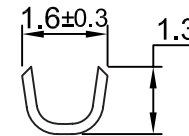
Series

of Holes
02 ~ 16

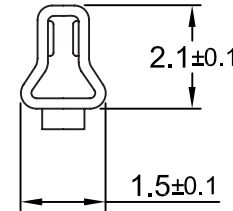
Contacts	Dimension mm	
	A	B
2	2.0	5.8
3	4.0	7.8
4	6.0	9.8
5	8.0	11.8
6	10.0	13.8
7	12.0	15.8
8	14.0	17.8
9	16.0	19.8
10	18.0	21.8
11	20.0	23.8
12	22.0	25.8
13	24.0	27.8
14	26.0	29.8
15	28.0	31.8
16	30.0	33.8



A-A SECTION



B-B SECTION

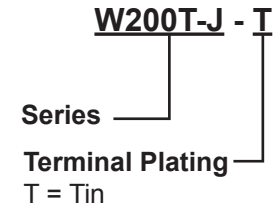


C-C SECTION

Specifications

Current Rating: 1A AC, DC
 Voltage Rating: 100V AC, DC
 Operating Temperature : -25°C ~ +85°C
 Contact Resistance: 20 ohms max.
 Insulation Resistance: 1000 ohms min.
 Dielectric Withstanding Voltage: 800V AC / min.
 Terminal Material: Phosphor Bronze / Tin-plated
 Thickness: 0.2mm
 Wire Range: 24 to 30 AWG
 Insulation O.D.: 1.4 - 1.13mm
 Packaging: 10,000pcs / Reel
 *Terminal for Housing W200H-J

Part Numbering System



General Tolerance	
X. ± 0.50	X.° ± 5°
.X ± 0.20	.X° ± 2°
.XX ± 0.10	.XX° ± 1°
Units : mm	