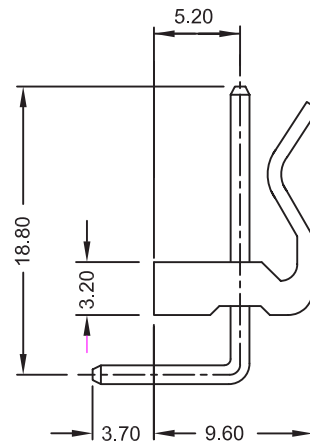
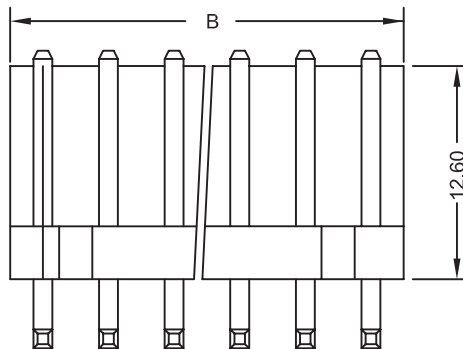
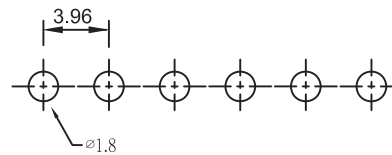
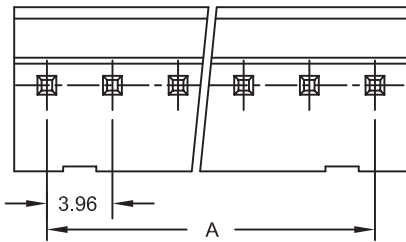


Specifications

Current Rating: 7 Amp
 Voltage Rating: 250V AC, DC
 Operating Temperature : -40°C ~ +105°C
 Contact Resistance: 10 m ohms max.
 Insulation Resistance: 1000M ohms min.
 Withstanding Voltage: 2200V AC / minute
 Terminal Material: Brass / Tin-plated
 Material: Nylon 66, UL94V-2

Recommended P.C. Board Hole Layout



Part Numbering System

W39612 R - XX T

Series

Function

R = Right Angle

of Contact

02 ~ 20

Contact Plating

T = Tin

Contacts	Dimension mm	
	A	B
2	3.96	8.00
3	7.92	12.00
4	11.88	15.90
5	15.84	20.00
6	19.80	24.00
7	23.76	27.90
8	27.72	31.90
9	31.68	35.80
10	35.64	39.90
11	39.60	43.90
12	43.56	47.70
13	47.52	51.80
14	51.48	55.70
15	55.44	59.70
16	59.40	63.80
17	63.36	67.70
18	67.32	71.70
19	71.28	75.60
20	75.24	79.80

General Tolerance	
X. ± 0.50	X.° ± 5°
.X ± 0.20	.X° ± 2°
.XX ± 0.10	.XX° ± 1°

Units : mm